

Set the desired connections

INTERNET/SERVER

Workshop cable
network



Workshop WLAN



No connection



MULTIPLEXER



Cable connection
(autom. selection)



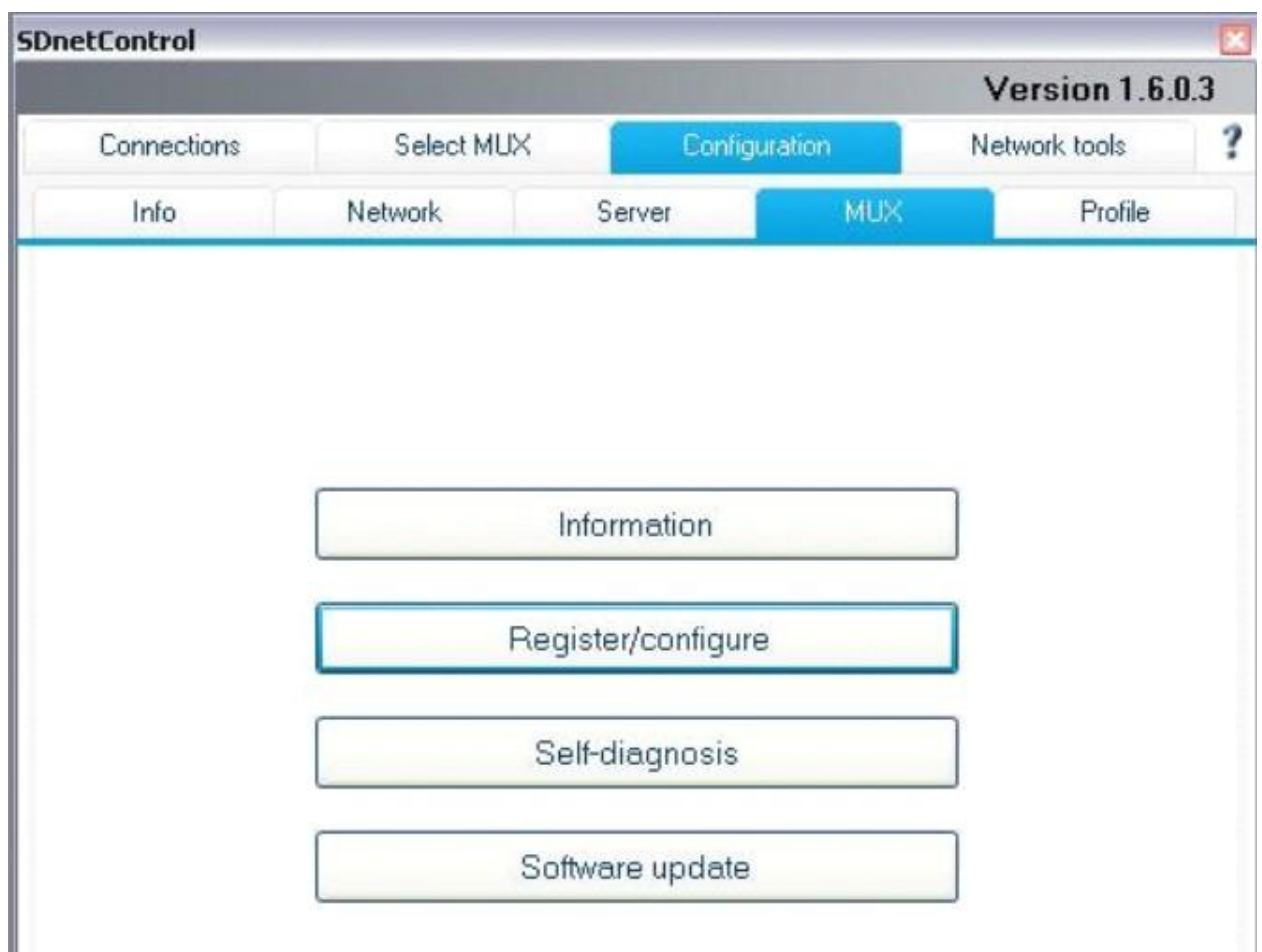
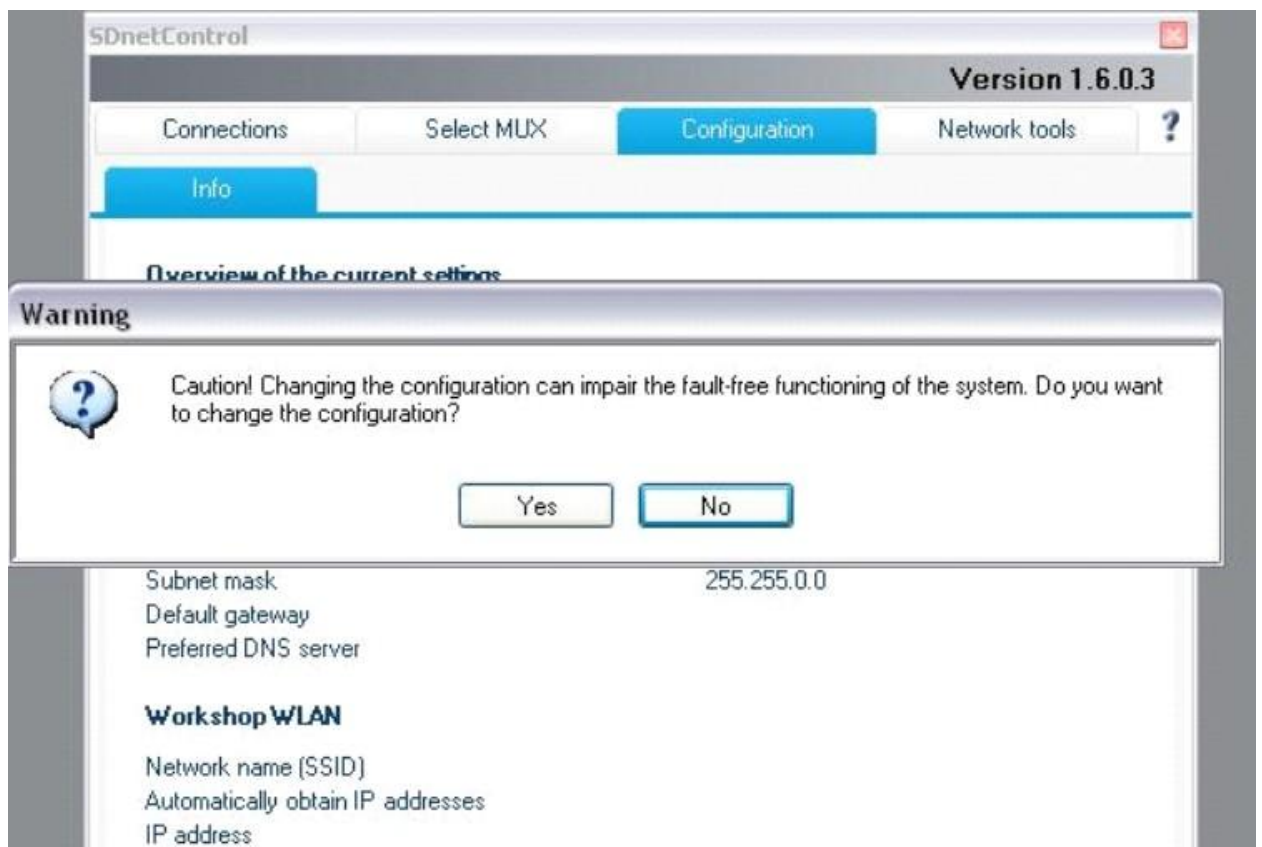
Workshop WLAN



Road WLAN

OK

Cancel



SDconnect Toolkit

Administration

05 / Cable Accessible

Information

Register/configure

Self-diagnosis

Software update

General information

Select name

05

Serial number

155988

CHINA

255.255.255.0

workshop

WEP / ASCII

255.255.255.0

Road24h

WEP / ASCII

dition

Close

Mercedes-Benz

SDconnect Toolkit

Administration

Select the name for SDconnect

01

02

03

04

05

06

07

08

09

10

11

12

13

14

15

16

17

18

19

20

21

22

23

24

25

26

27

28

29

30

31

32

33

34

35

36

37

38

39

40

SDconnect Toolkit

Administration

05 / Cable Accessible

Information

Register/configure

Self-diagnosis

Software update

General information

Select name

05

Serial number

155988

WLAN mode

WLAN regional setting

CHINA

WLAN parameters, workshop

DHCP

IP address

255.255.255.0

Network screen

workshop

Gateway

SSID (network name)

WEP / ASCII

Encryption

Key

WLAN parameters, road

IP address

192.168.2.200

Network screen

255.255.255.0

SSID (network name)

Road24h

Encryption

WEP / Hex

Key

aaaaaaaaaaaaaaaaaaaaaaaaaaaa

Start

Delivery condition

Close

Information

Register/configure

Self-diagnosis

Software update

General information

Select name

155988

Serial number

155988

WLAN mode

CHINA

WLAN regional setting

CHINA

WLAN parameters, workshop

DHCP

IP address

255.255.255.0

Network screen

workshop

Gateway

SSID (network name)

WEP / ASCII

Encryption

Key

WLAN parameters, road

IP address

255.255.255.0

Network screen

Road24h

SSID (network name)

WEP / Hex

Encryption

Key

Start

Delivery condition

Close

Information

Register/configure

Self-diagnosis

Software update

General information

Select name

05

configuration.xml

Print

OK

SDconnect Toolkit - device configuration

General information:

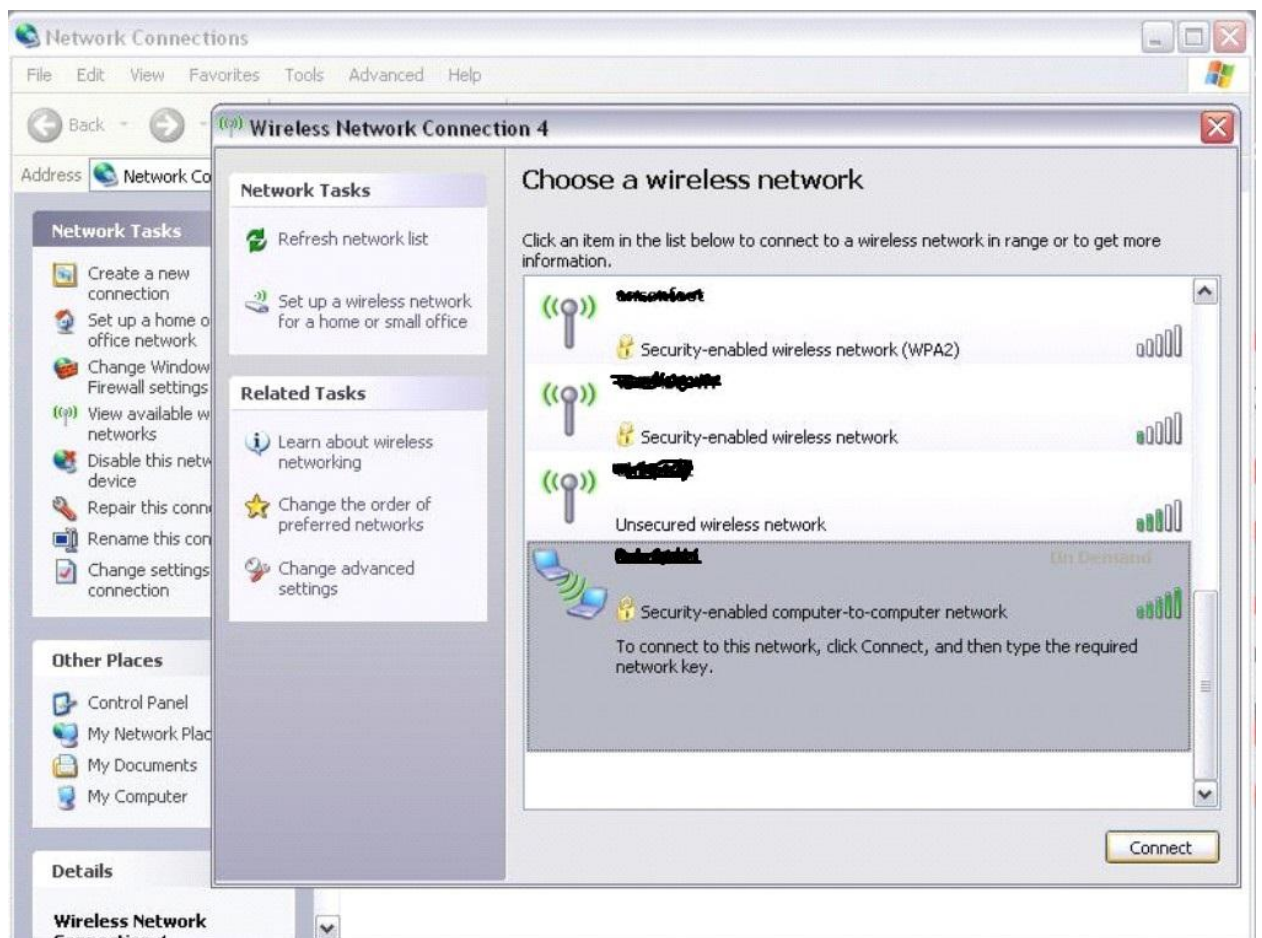
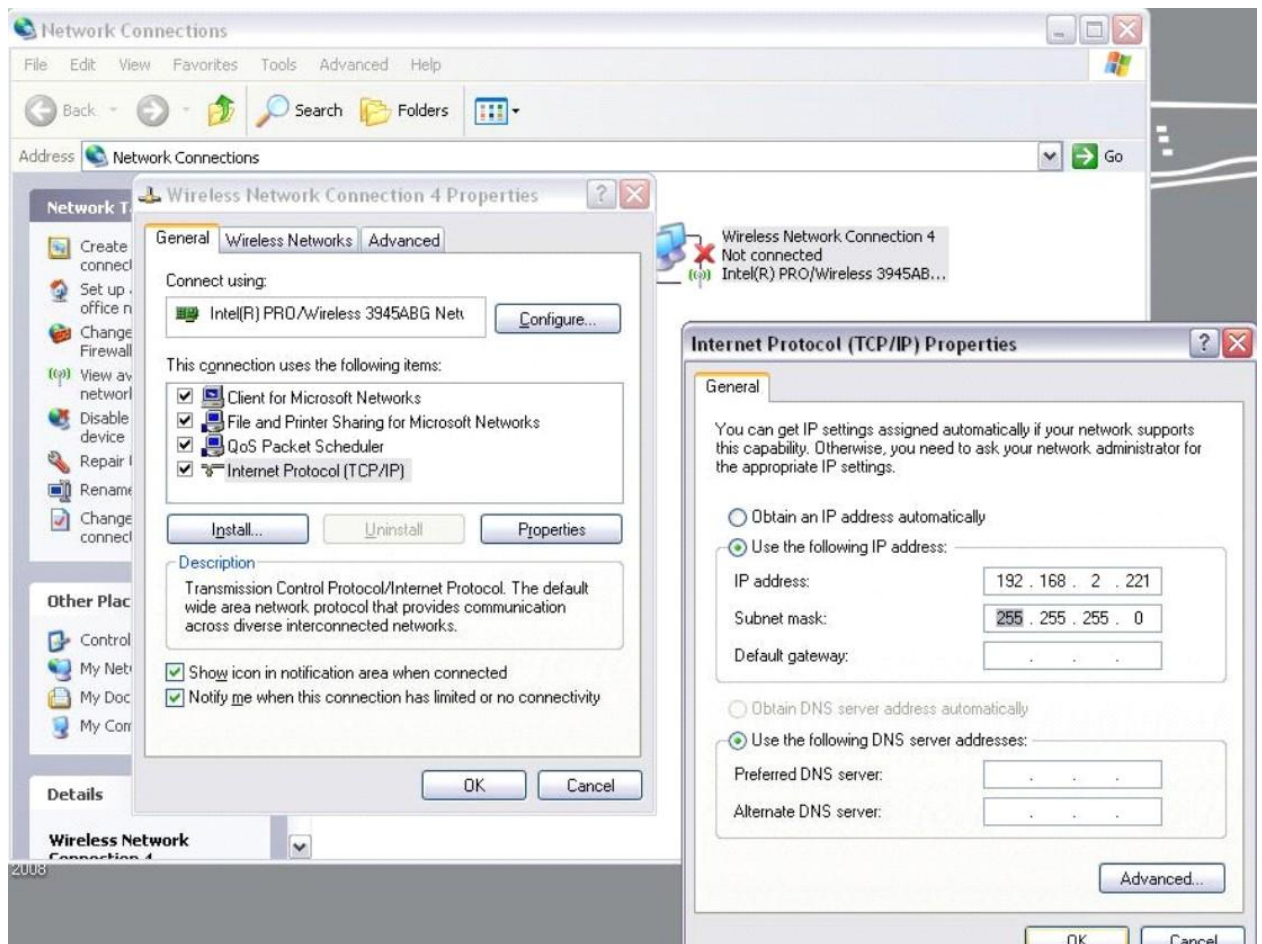
Type	Version/Data
Colornumber:	5
Serialnumber:	155988
Device state:	OK
HW-Version:	0205
Working State:	Accessible
Last used:	100 days ago
Powersupply:	Vehicle
Toolkitversion:	2.1.0-3
Tester:	Star54321

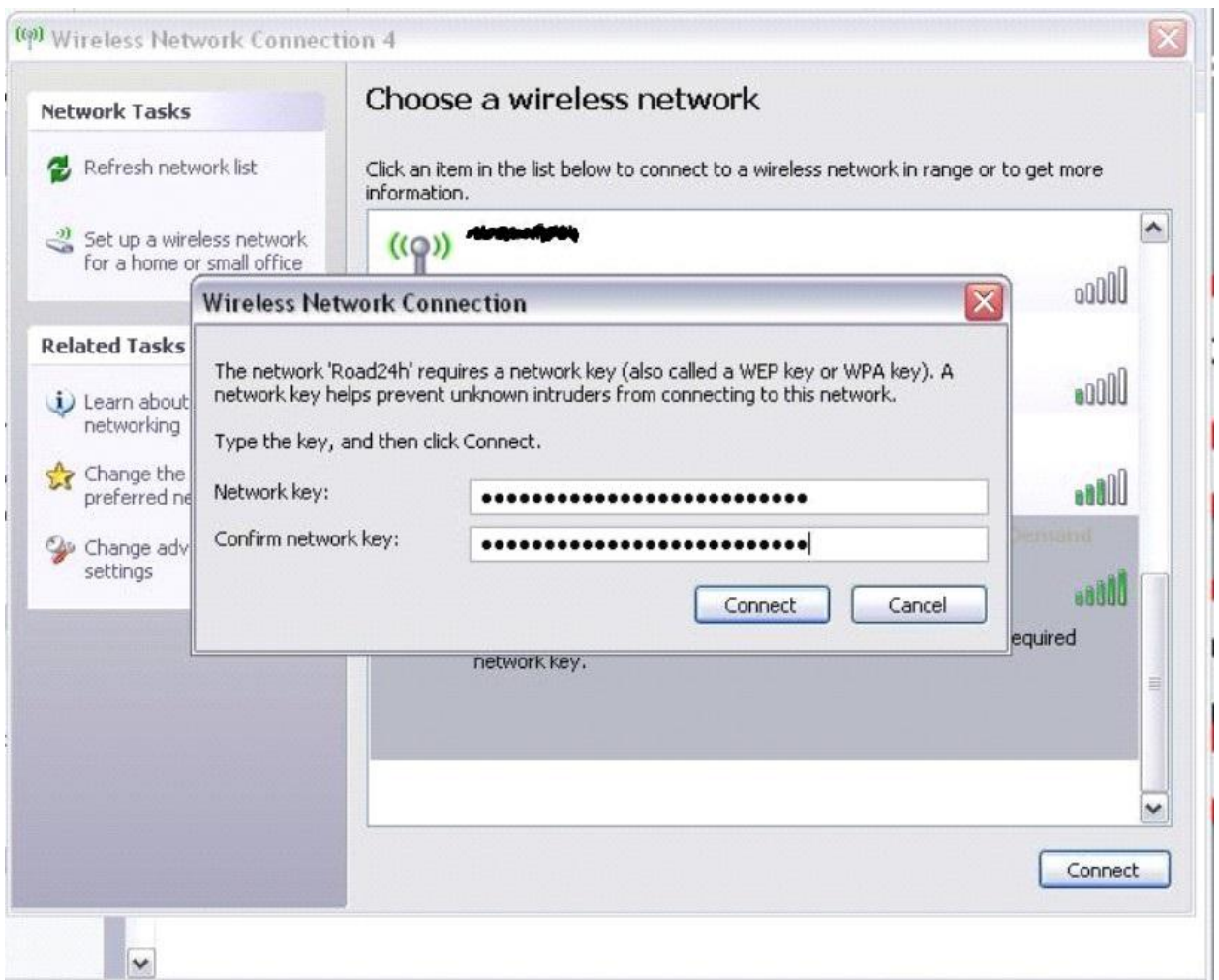
WLAN configuration:

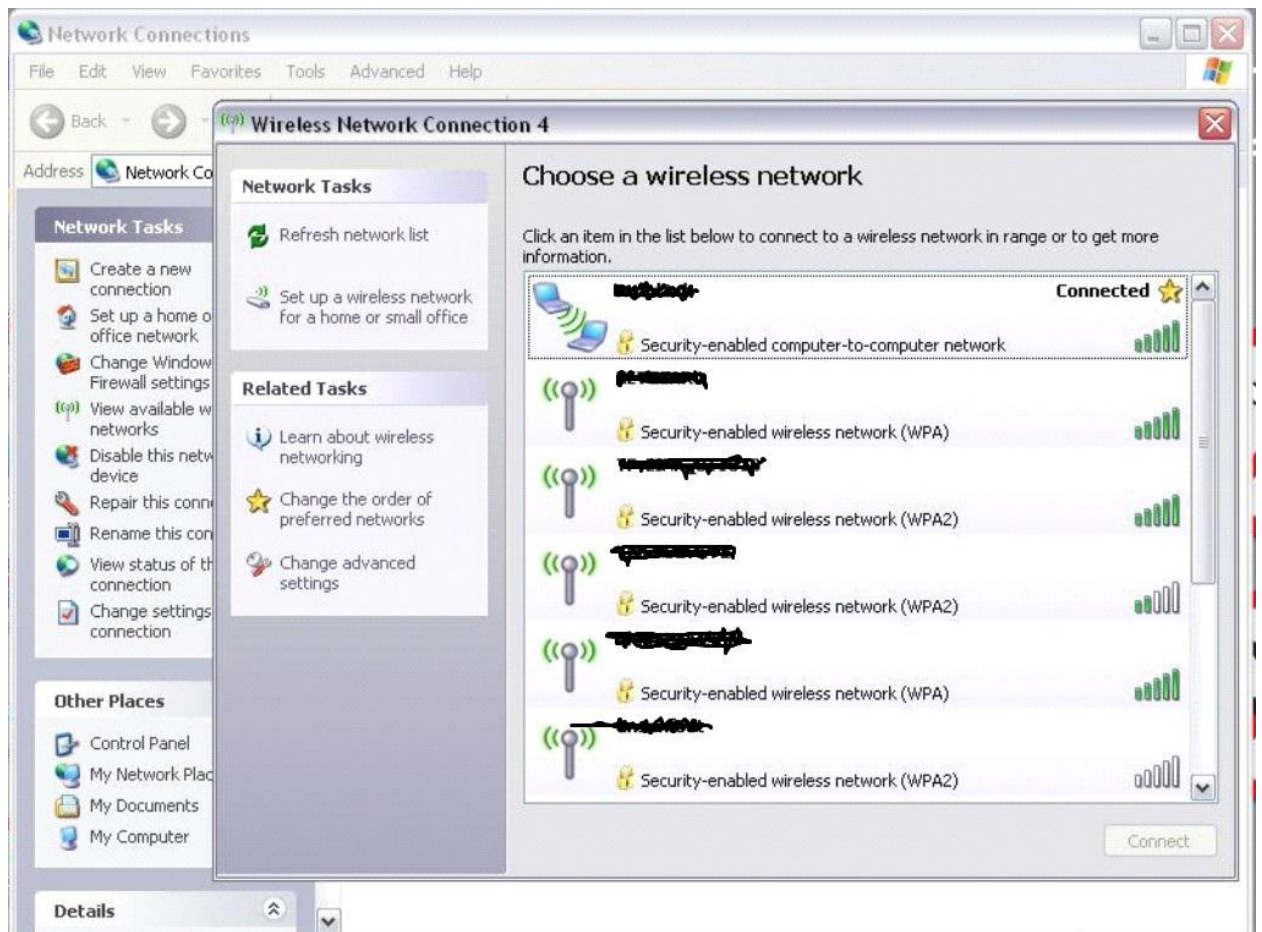
Type	Data
General:	
MAC address:	001B11BFA6D5
Mode:	Road WLAN
Region:	CHINA
Infrastructure:	
DHCP:	No
IP address:	
Mask:	
SSID:	
Encryption:	
Key:	
Ad-Hoc:	
IP address:	192.168.2.200
Mask:	255.255.255.0
SSID:	Road24h
Encryption:	WEP128
Key:	aaaaaaaaaaaaaaaaaaaaaaaaaaaaaaaa

LAN configuration:

Type	Data
MAC address:	0010020E1881
DHCP:	No
IP address:	172.29.127.129
Mask:	255.255.255.0
Gateway:	
Software:	
Type	Data
UBoot:	1:0:3
OS:	1:8:20070611
CSD:	1:21:20090827
PmPic:	2:7:20091007
CAESAR:	0:9:0
SecPic:	
Release:	
WlanDrv:	0:1:20060128
Wlan type:	ATHEROS_5212









Connections

Select MUX

Configuration

Network tools



Select the desired SDconnect

	SDconnect	Status	Info
X	05	accessible	



Select

 Test signal

OK

Cancel

SDnetControl

Version 1.6.0.3

Connections

Select MUX

Configuration

Network tools

?

Info

Network

Server

MUX

Profile

Information

Register/configure

Self-diagnosis

Software update

Workshop cable network IP address

OK

Cancel

