

PASS-CODE Calculator for Toyota, Lexus, Scion

PASS-CODE Calculator used for programming keys for **Toyota, Lexus** and **Scion** models. Also used for **Smart Code Resetting**. You can use original Toyota **Techstream** software and compatible OEM interface.

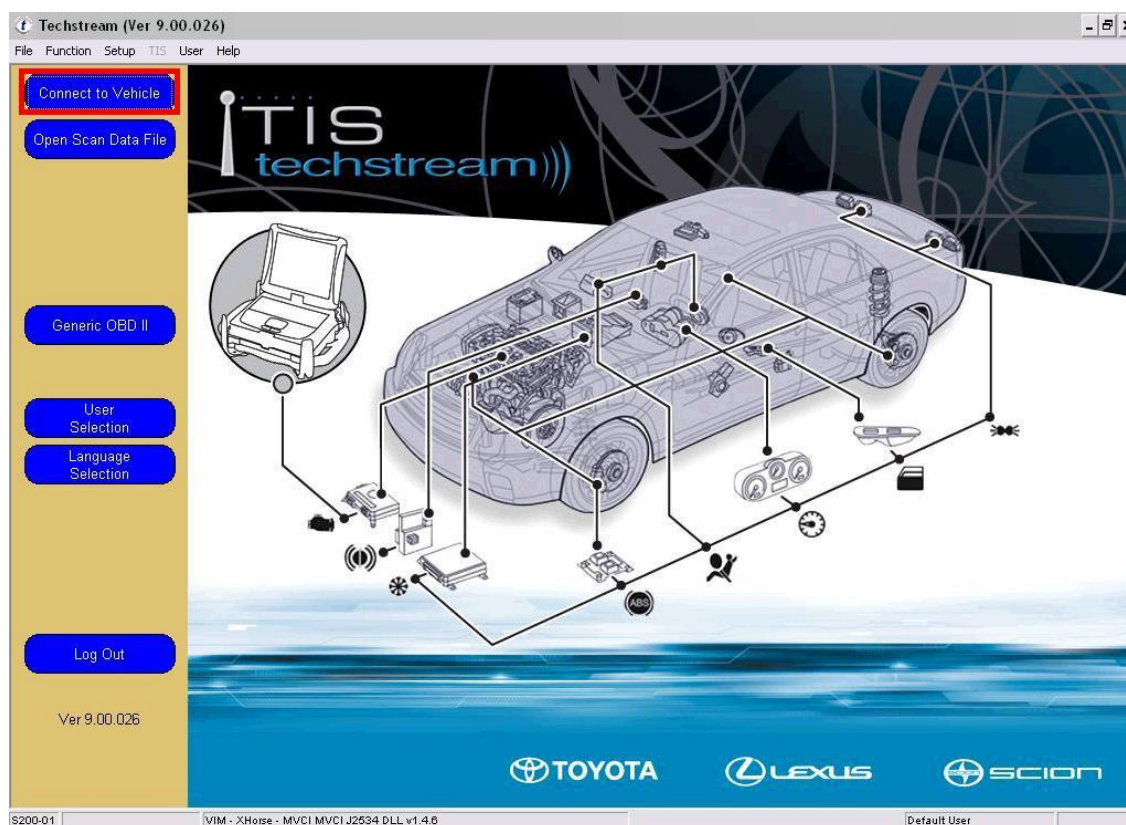
Supported software versions of **Techstream**:

- 9.00.026
- 9.00.025
- 8.30.023
- 8.20.019
- 8.11.006
- 8.10.021
- 8.00.034

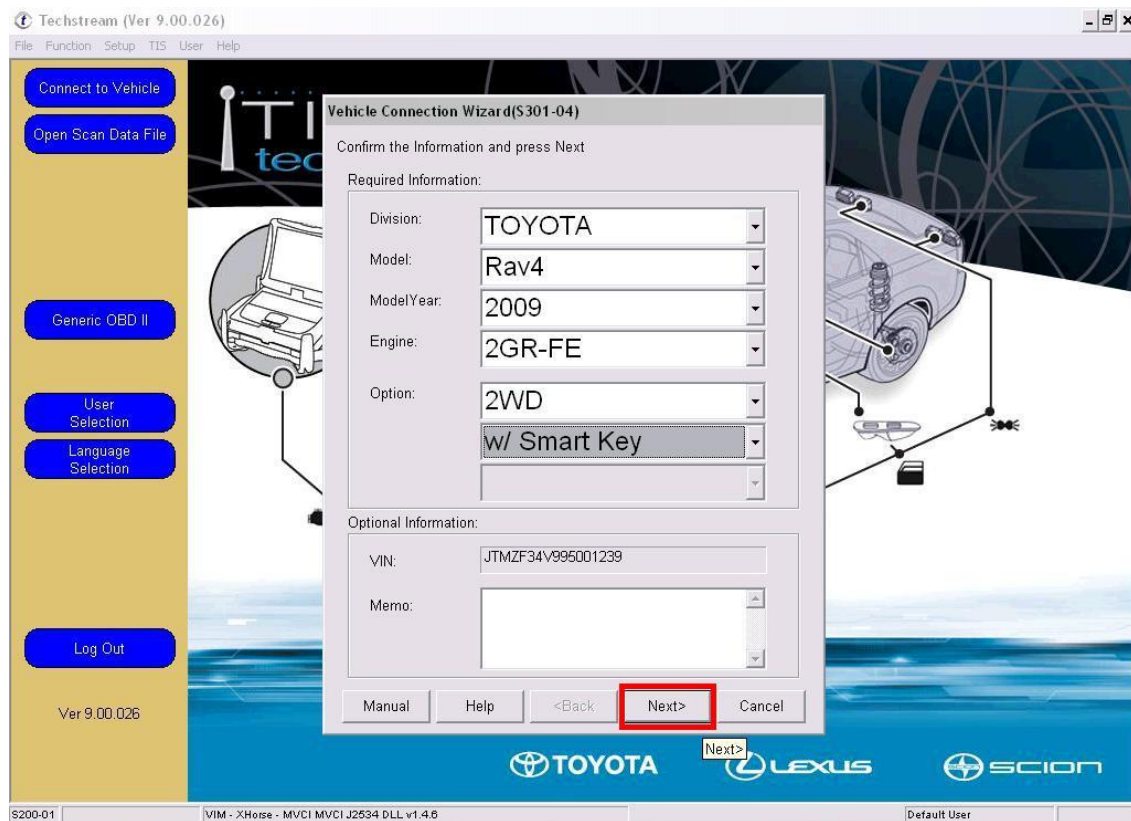
Instructions how to use PASS-CODE Calculator

Smart Code Reset:

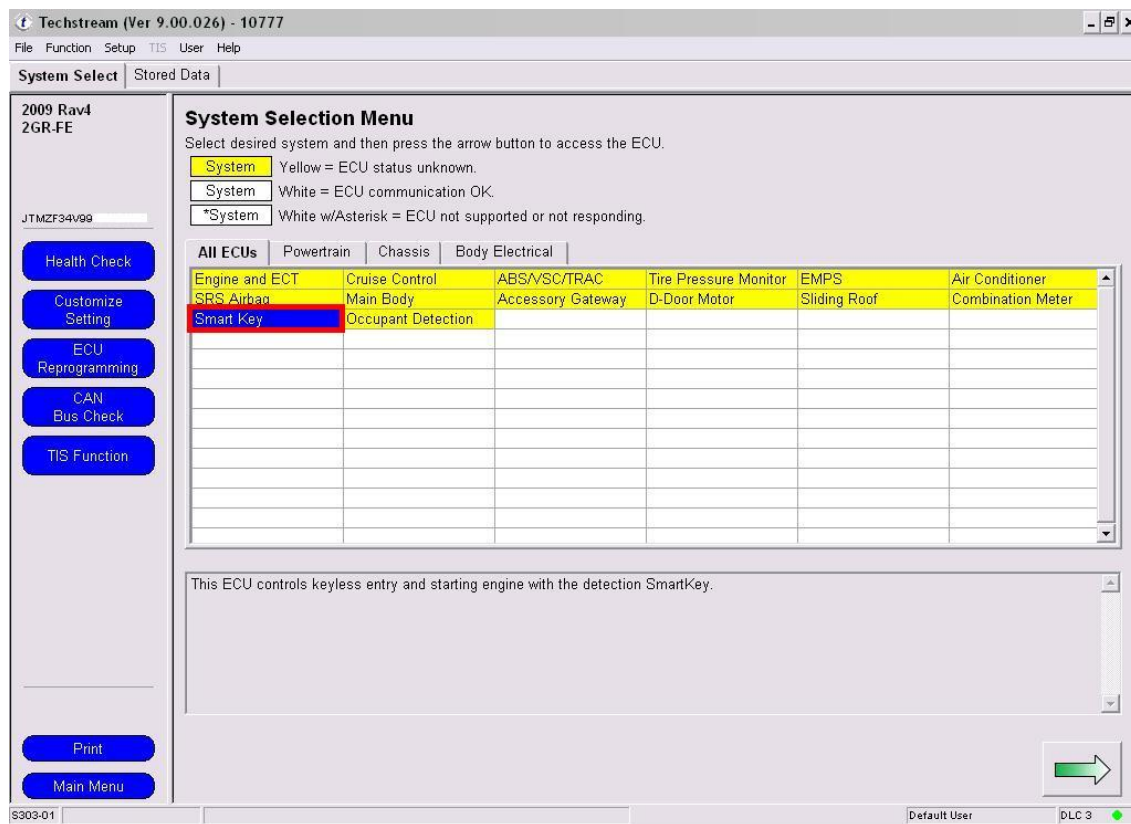
1. Connect to the vehicle:



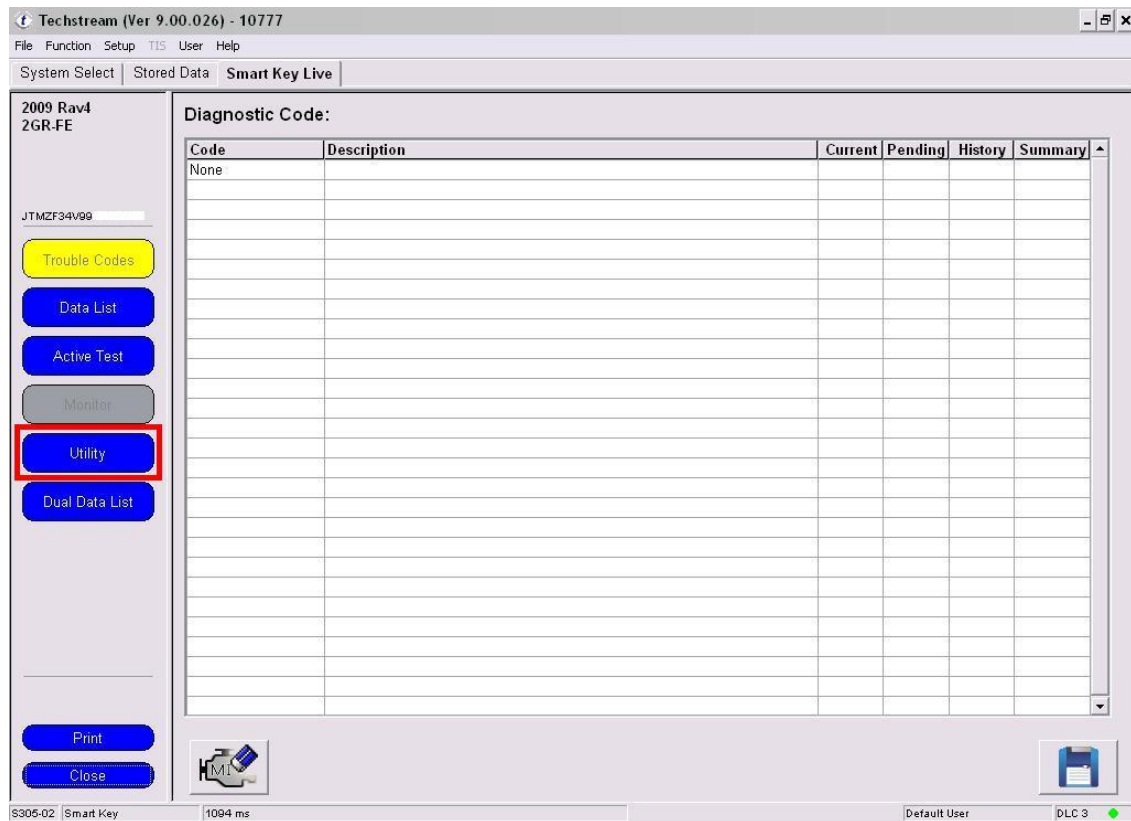
2. Select **Division**, **Model**, **Year**, **Engine** and specify **Options**:



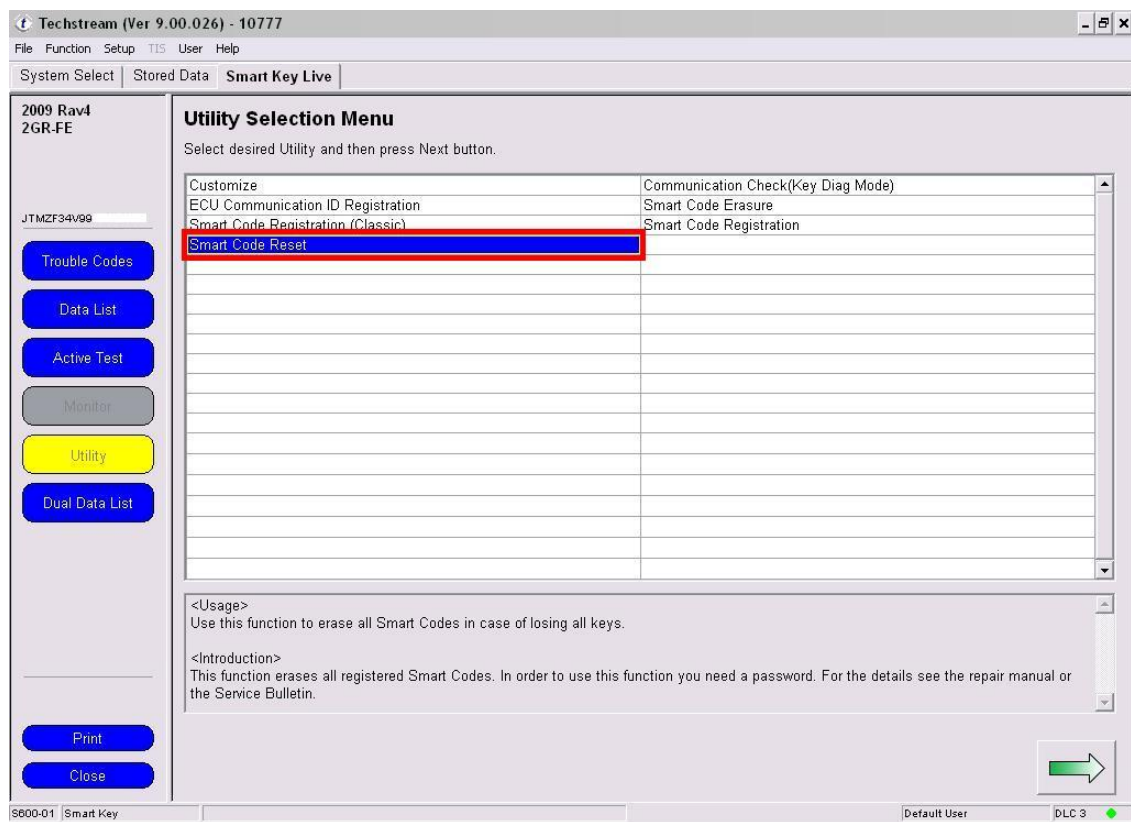
3. Select ECU **Smart Key** for Smart resetting:



4. Click for **Utility**:

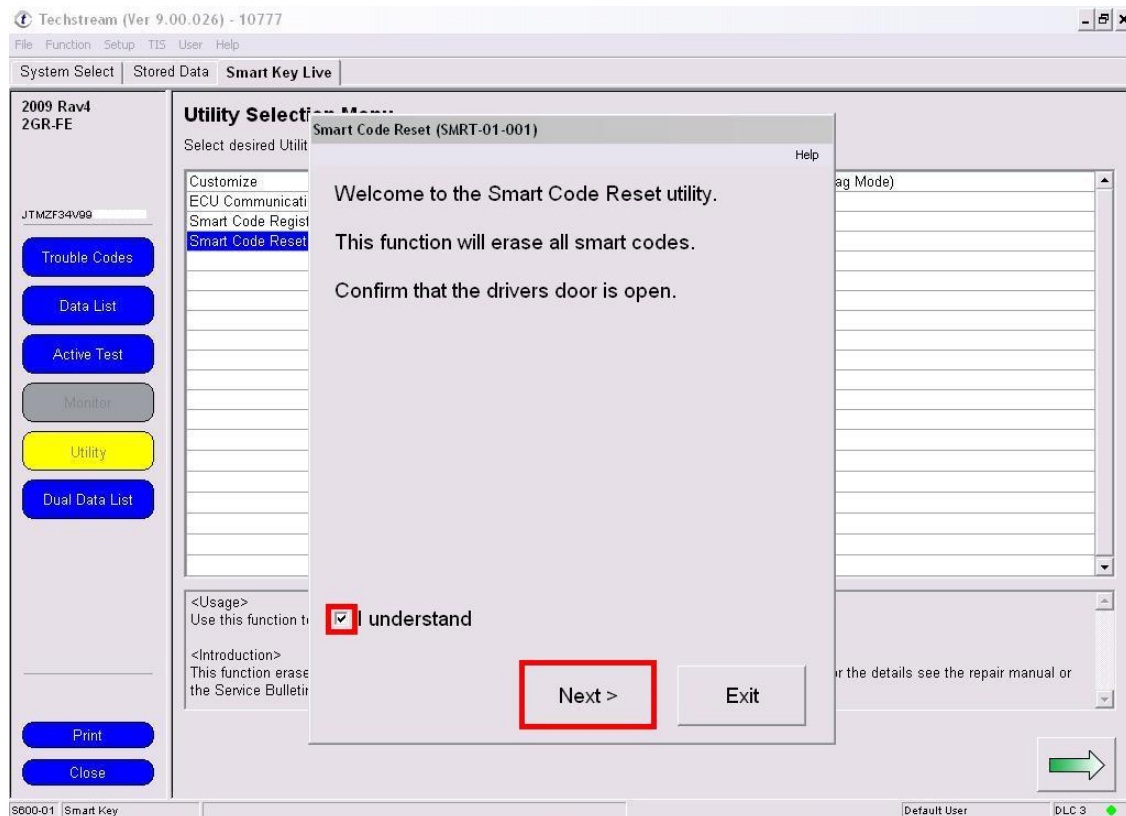


5. Then choose **Smart Code Reset** in **Utility Selection Menu**:

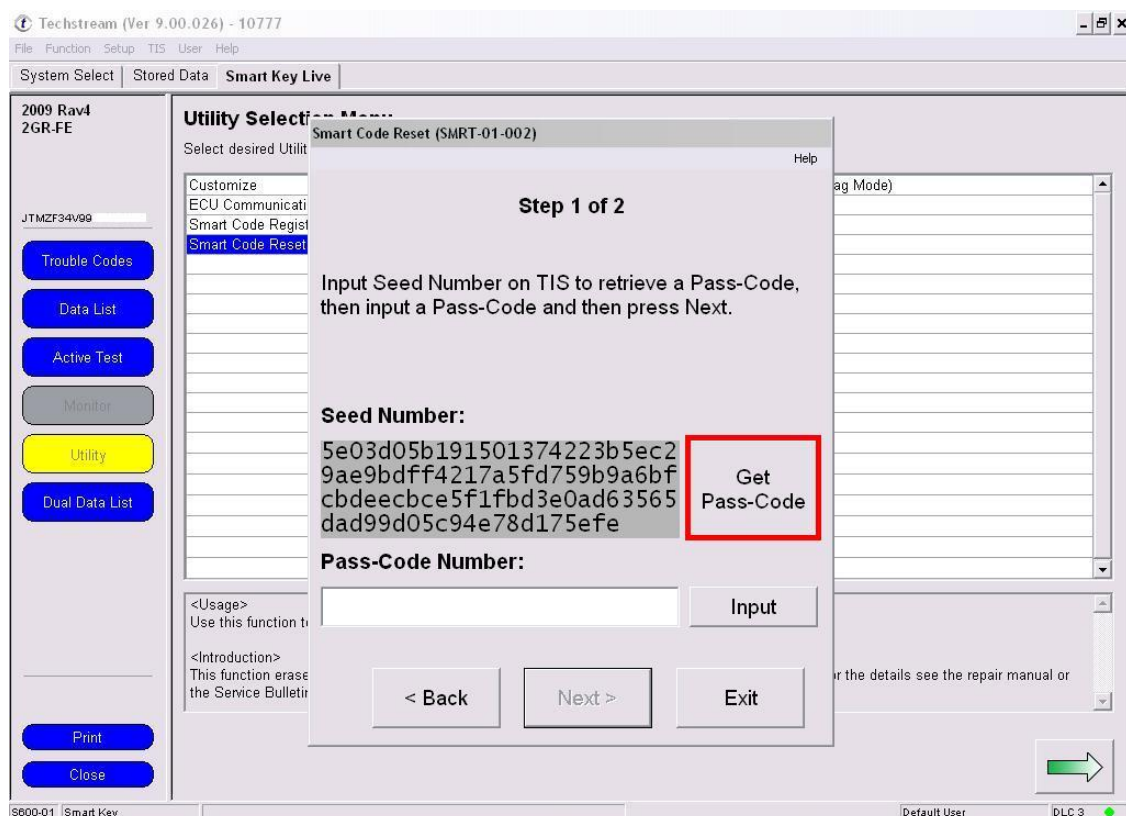


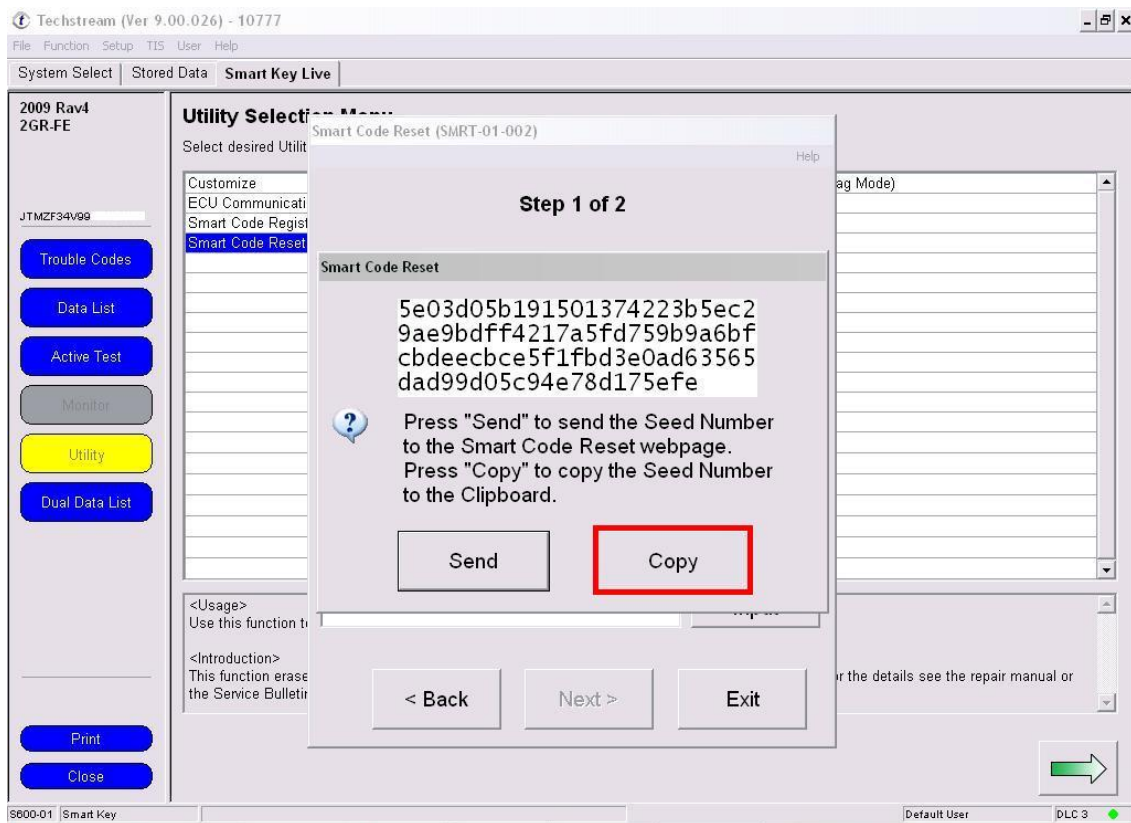
6. Make sure driver door is open. Other doors must be closed. Don't touch steering wheel and pedal.

ATTENTION! Smart Code Reset utility will erase all smart codes in vehicle!

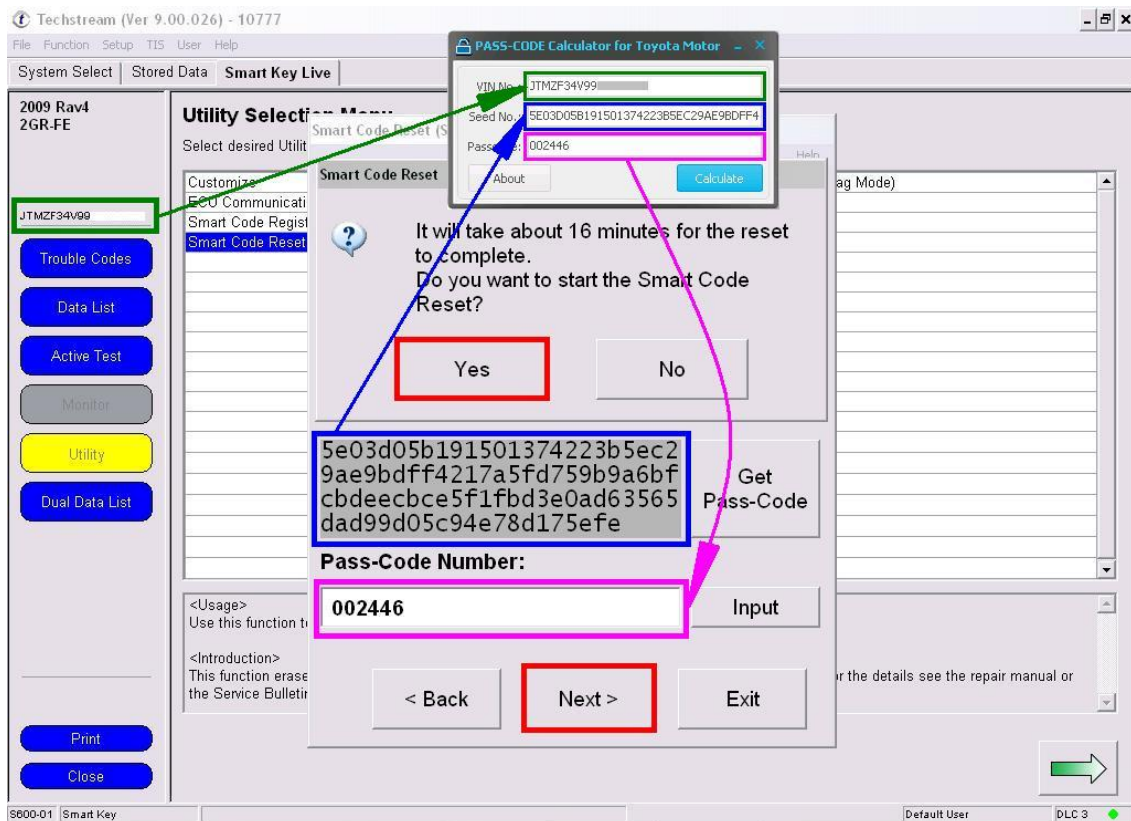


7. Click **Pass-Code** button and copy **Seed Number** to clipboard. **Not need to use Toyota Online.**

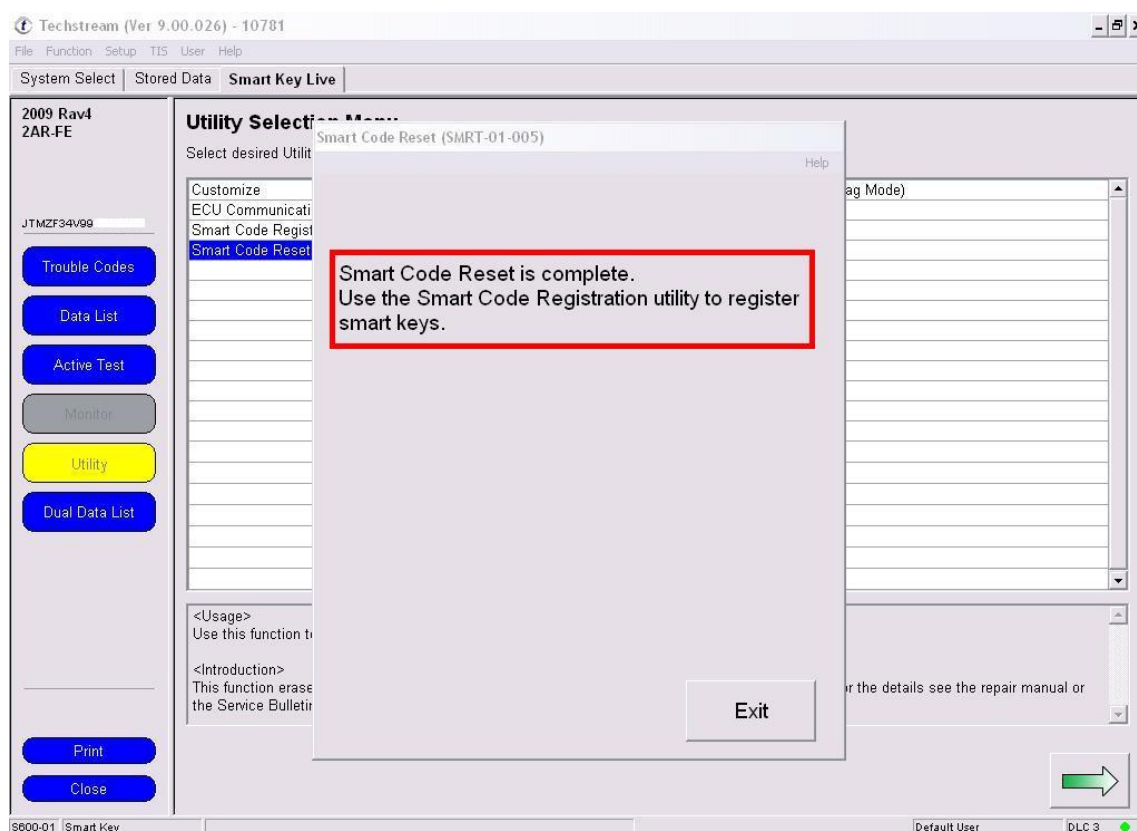
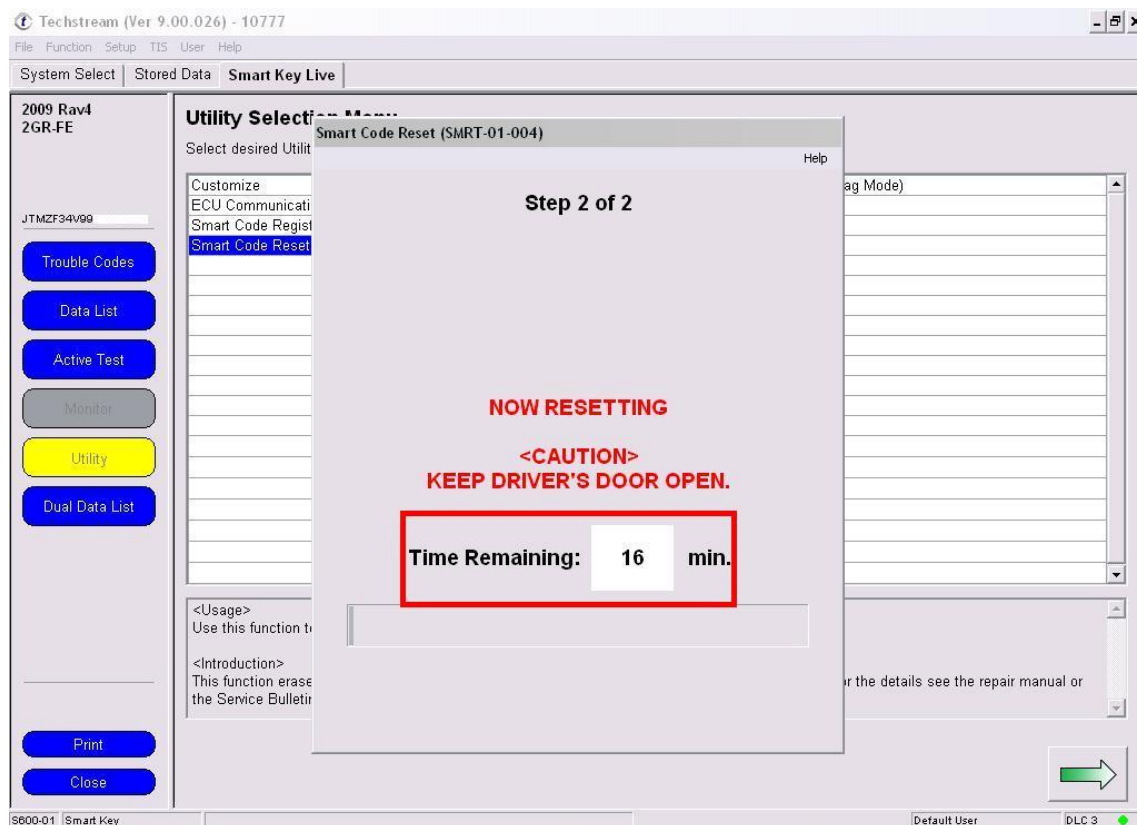




- Open **PASS-CODE** Calculator. Paste **VIN** vehicle, **Seed Number** and press **Calculate**. You will get **Pass-Code Number**. Paste **Pass-Code**, click **"Next"** and confirm:



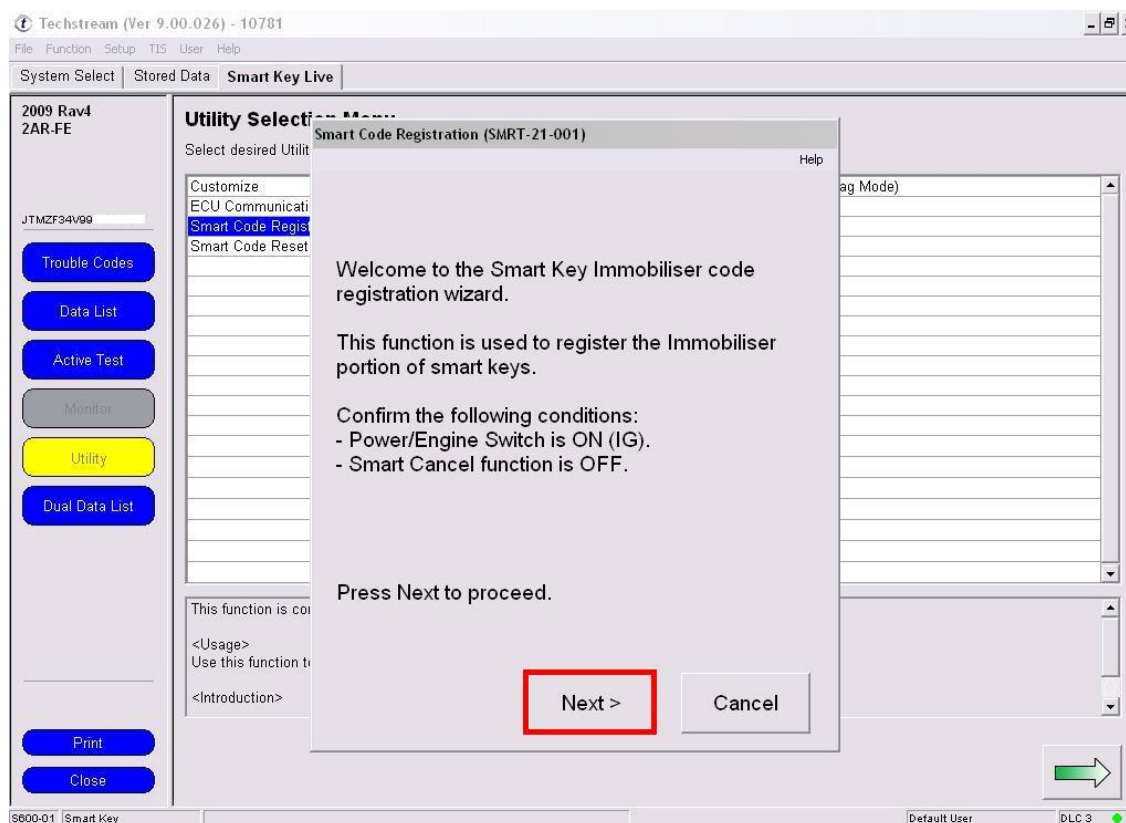
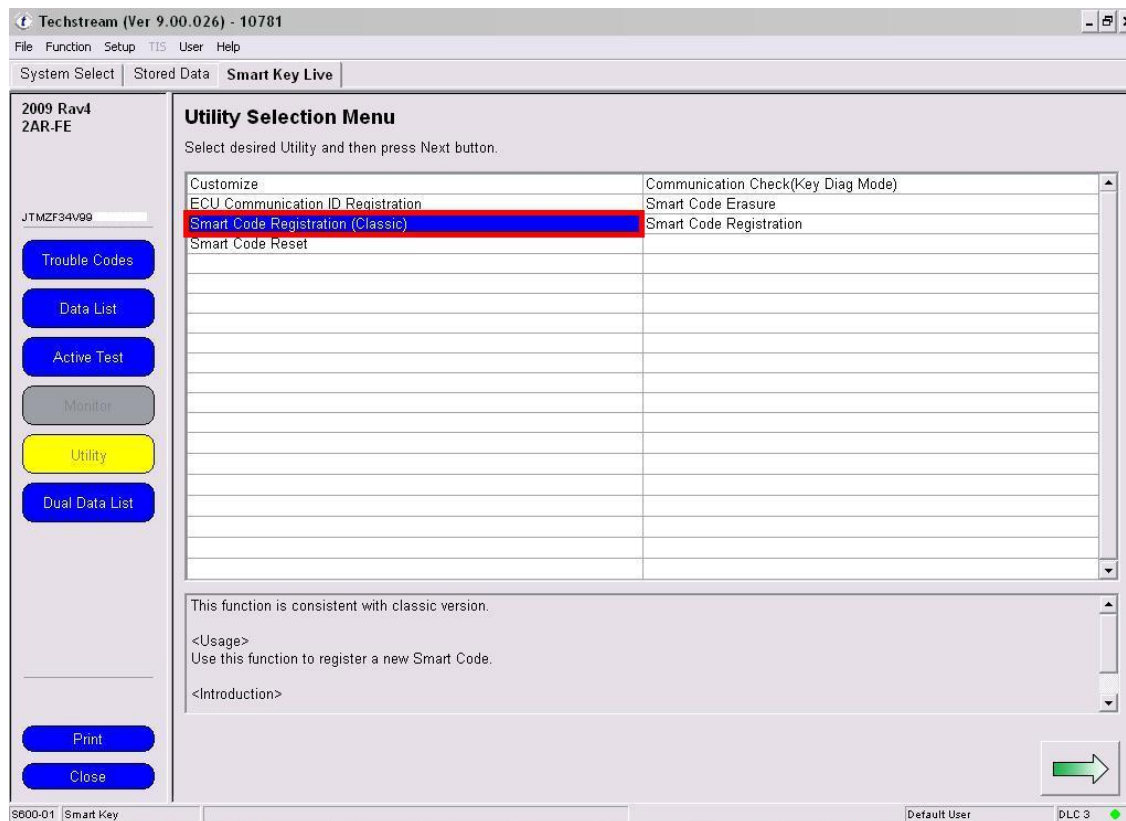
9. **Smart Code Reset** will start. Wait for **16 Minutes** for Smart Resetting. Then use one of the Toyota factory procedure for programming keys.



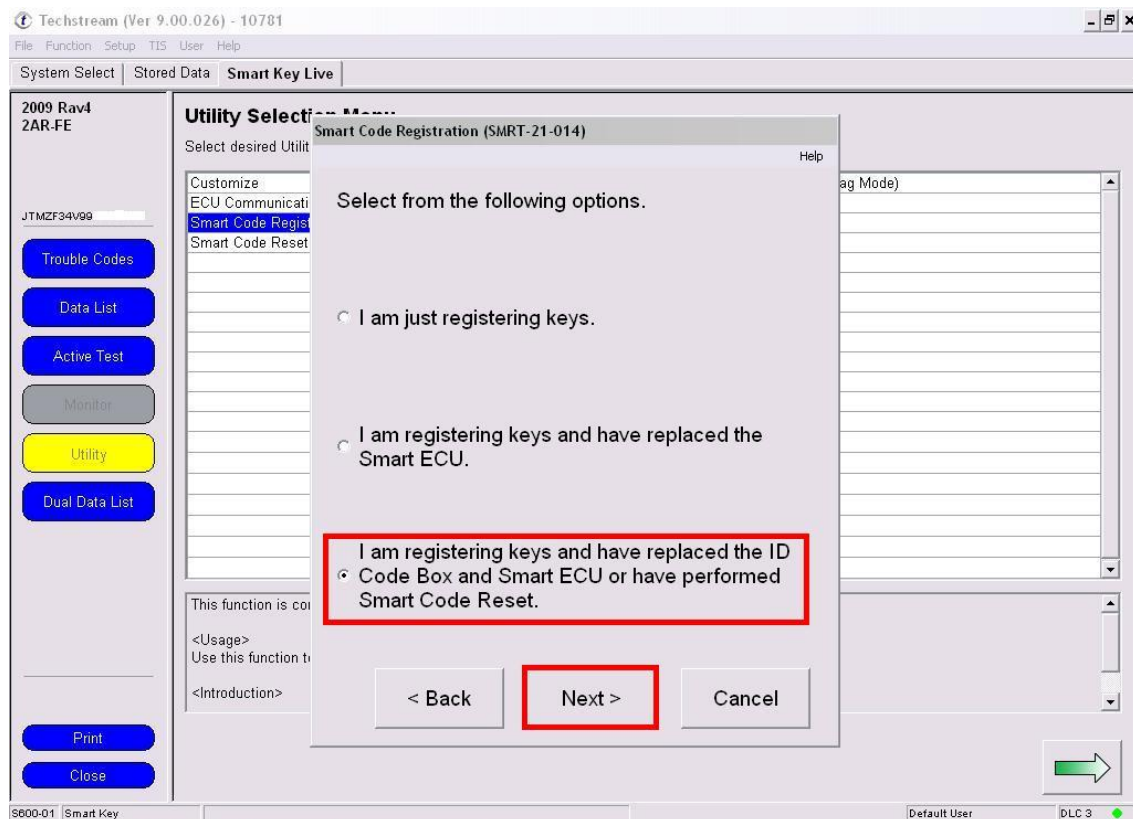
Smart-Key Programming procedure:

(Example, when **ID Code Box** and **Smart ECU** had replaced. **Smart Code Reset** must be performed!)

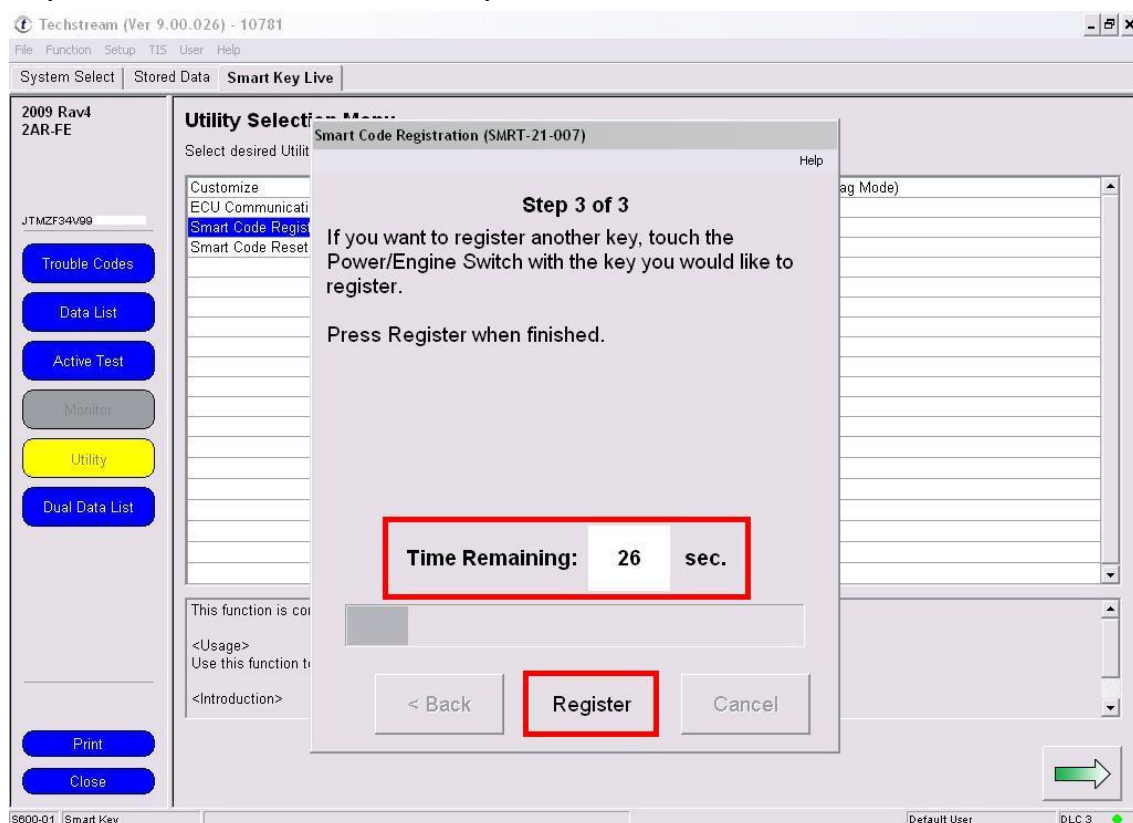
1. Select **Smart Code Registration** in **Utility Selection Menu** and press Next:



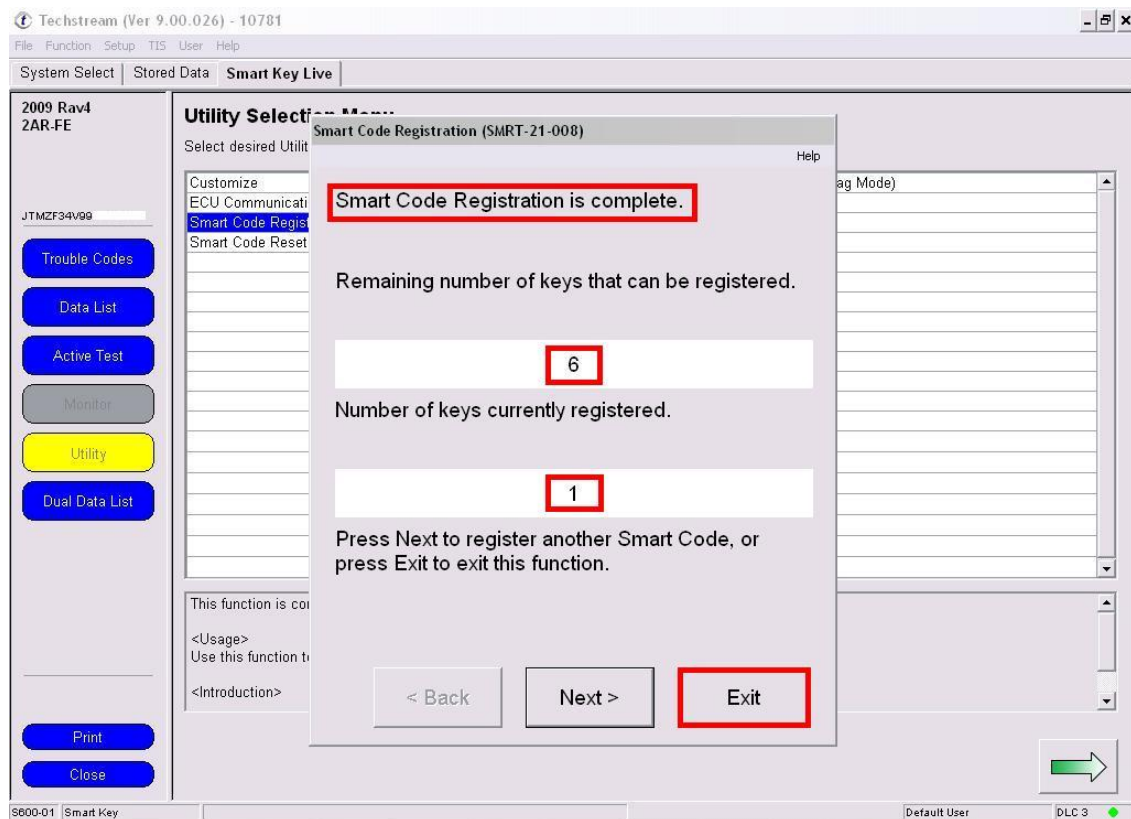
2. Choose third point and press **Next**:



3. Program keys. To register key touch the Power/Engine Switch with the key – you will hear a signal, and then move the key to the center of car cabin – you will hear a signal once again. To register second, third key, etc. – just repeat “touch and move” operations. You have 30 seconds to do this.




4. Smart Code Registration is complete.



IMPORTANT! You can use this **Smart Code Registration** procedure even **ID Code Box** and **Smart ECU** had **not** been replaced. Both for new and used smart-keys.

EXTRA: PASS-CODE Calculator works only with USB key.

 **PASS-CODE Calculator for Toyota Motor** - X

VIN No.:

Seed No.:

Passcode:

